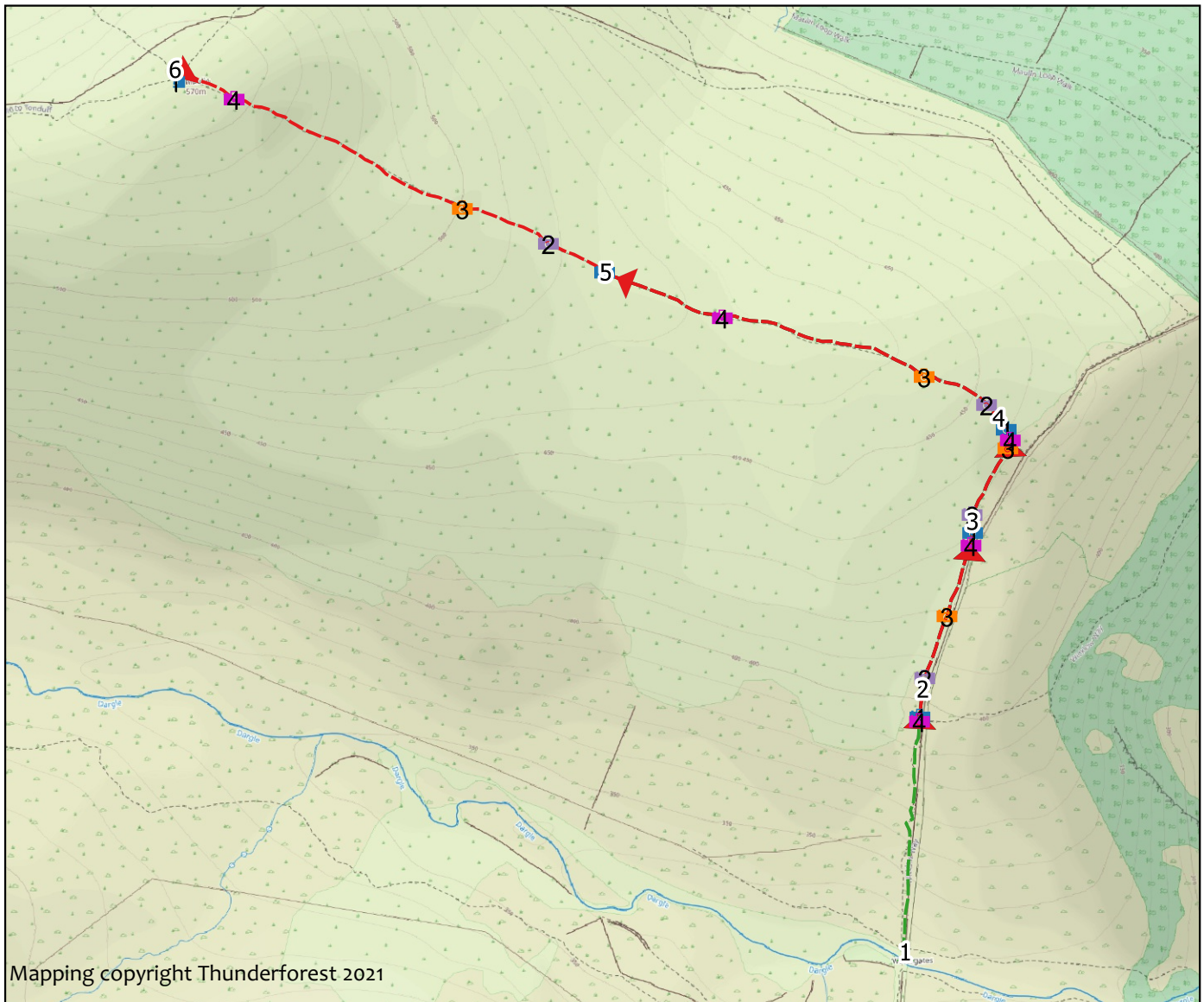


Survey date: Apr 23, 2021

Length: 1653m

Sections: 5



0 200 400 m



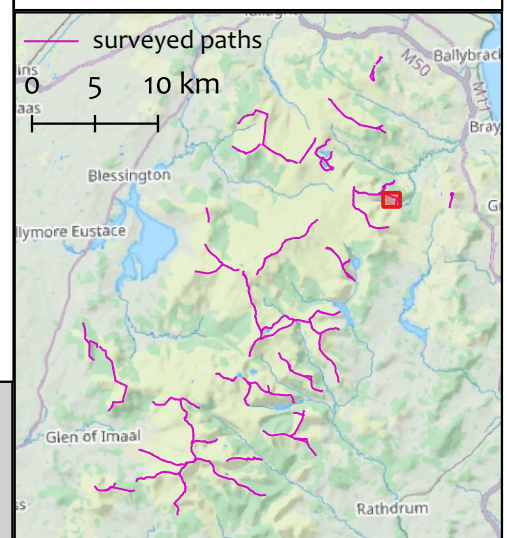
- | | | |
|----------------|------|------|
| — Non-peat | 1 P1 | 4 P4 |
| — Shallow peat | 2 P2 | |
| — Deep peat | 3 P3 | |

Overall description: Surveyed path extends from the water gates to the summit of Maulin.

Overall assessment: Work previously done is in need of repair and improvement particularly on the steep ground near the water gates

Weather conditions at time of survey:

Work summary: Major repair required



Current Condtion

Length (m)	Max gradient (%)	Min gradient (%)	Crossfall (%)
279	28	10	0

Substrate	Peat Depth (cm)
mineral_soil	0

	Minimum	Maximum	Typical
Trampled width (m)	2.5	3	5
Bare width (m)	0.8	1.5	3
Eroded depth (m)	0	0	0

Availability of Materials: Good blockers available

Site Assessment:

Work Required

Work type	Estimated input	Work Summary
part_repair	20 days labour	Blocking and landscaping or fully replace the pitching (300 days labour); trees and gorse would be effective blockers; Some pitching could be replaced with aggregate on lower gradient to stop people going off path



Wicklow Way to Maulin (Section 2)

Section description: Leave wicklow way

Start: O 19267 12358 (± 4m)

End: O 19325 12556 (± 4m)

Current Condtion

Length (m)	Max gradient (%)	Min gradient (%)	Crossfall (%)
200	15	10	0

Substrate	Peat Depth (cm)
peat	20

	Minimum	Maximum	Typical
Trampled width (m)	1	1.5	2
Bare width (m)	1	1.5	2
Eroded depth (m)	0	0.2	0.3

Availability of Materials: Limited block stone
Site Assessment:Don't take stone from the wall

Work Required

Work type	Estimated input	Work Summary
minor_repair	10 days labour	Anchor bars and 3 water bars; repair eroded surface



1619201652656.jpg - O 19267 12363 (± 4m)

1619201742567.jpg - O 19273 12407 (± 4m)



1619201867612.jpg - O 19298 12477 (± 4m)

1619202047657.jpg - O 19325 12556 (± 5m)

Current Condtion

Length (m)	Max gradient (%)	Min gradient (%)	Crossfall (%)
128	8	5	0

Substrate	Peat Depth (cm)
peat	20

	Minimum	Maximum	Typical
Trampled width (m)	0.8	1.5	2
Bare width (m)	1	1.5	1.8
Eroded depth (m)	0	0.1	0.4

Availability of Materials: Good

Site Assessment:

Work Required

Work type	Estimated input	Work Summary
minor_repair	4 days labour	Repair 5m plus cross drain (by p2)



1619202278680.jpg - O 19327 12571 (± 4m)

1619202320609.jpg - O 19326 12591 (± 4m)



1619202508210.jpg - O 19367 12666 (± 4m)

1619202540284.jpg - O 19369 12675 (± 5m)

Wicklow Way to Maulin (Section 4)

Section description: Junction

Start: O 19370 12674 (± 4m)

End: O 19002 12826 (± 4m)

Current Condtion

Length (m)	Max gradient (%)	Min gradient (%)	Crossfall (%)
499	7	0	0

Substrate	Peat Depth (cm)
peat	30

	Minimum	Maximum	Typical
Trampled width (m)	1.5	2	6
Bare width (m)	1	1.2	4
Eroded depth (m)	0	0.3	0.3

Availability of Materials: Good

Site Assessment:

Work Required

Work type	Estimated input	Work Summary
early_intervention	8 days labour	Close braids; 5 water bars



1619202768466.jpg - O 19365 12687 (± 5m)

1619202846599.jpg - O 19343 12715 (± 4m)



1619203025062.jpg - O 19272 12747 (± 5m)

1619203295042.jpg - O 19044 12813 (± 5m)

Current Condtion

Length (m)	Max gradient (%)	Min gradient (%)	Crossfall (%)
547	30	15	0

Substrate	Peat Depth (cm)
peat	40

	Minimum	Maximum	Typical
Trampled width (m)	3	3.5	7
Bare width (m)	1	2	3.5
Eroded depth (m)	0	0.2	0.3

Availability of Materials: Block stone not big enough

Site Assessment: Might survive for a while

Work Required

Work type	Estimated input	Work Summary
major_repair	120 days labour	Drainage needs installing as minimum but would benefit from full rebuild



1619203750346.jpg - O 18912 12864 (± 4m)

1619203814468.jpg - O 18848 12897 (± 5m)



1619203964154.jpg - O 18751 12936 (± 4m)

1619204347603.jpg - O 18494 13060 (± 4m)