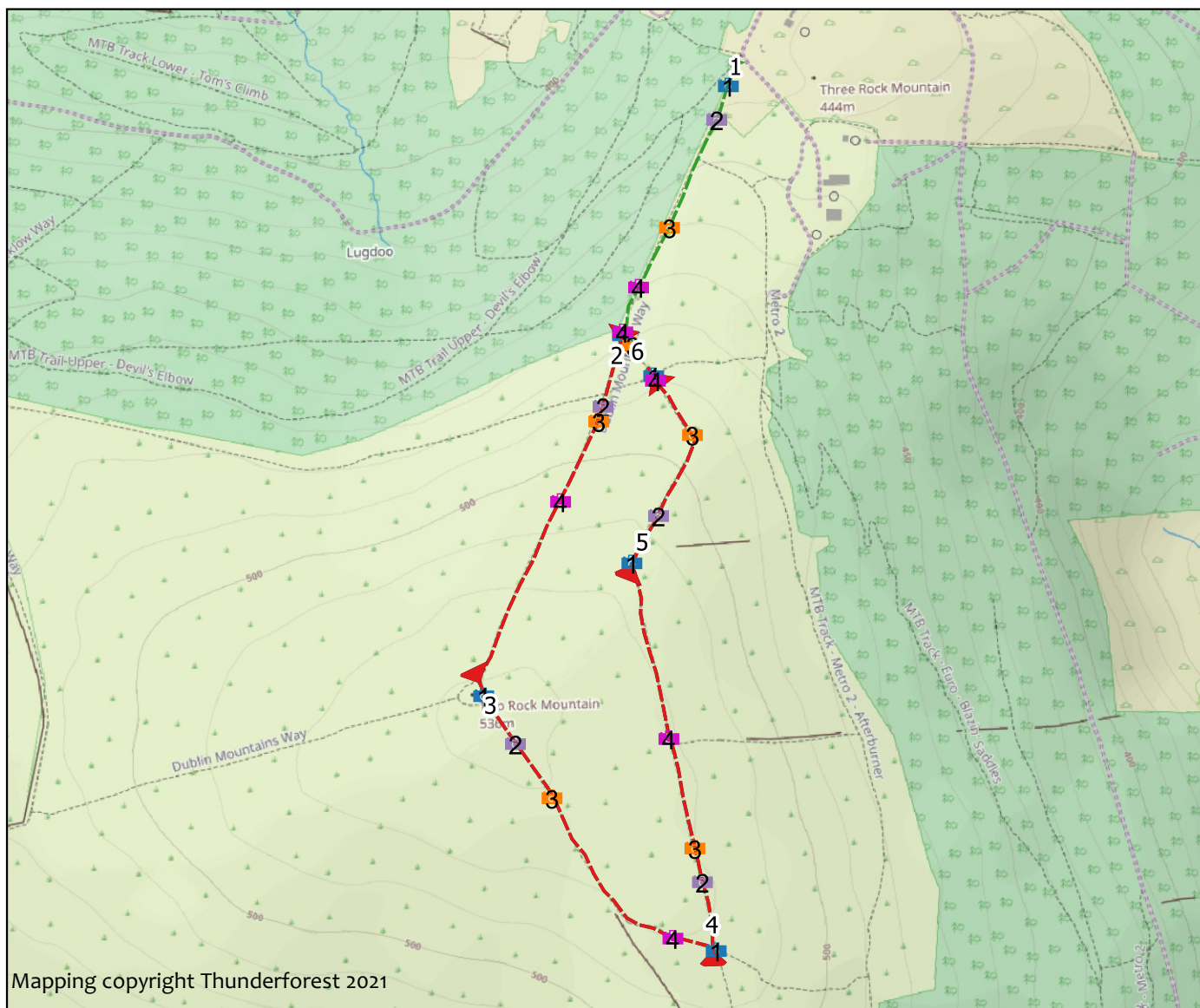


# Two Rock and Three Rock Mountains

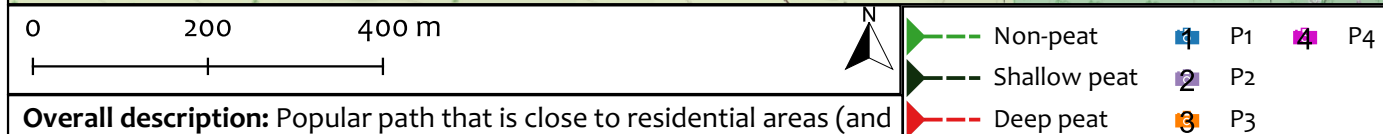
Survey date: Apr 30, 2021

Length: 2230m

Sections: 6



Mapping copyright Thunderforest 2021

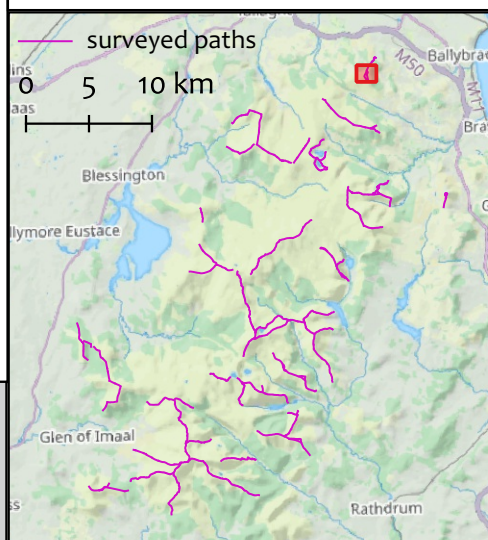


**Overall description:** Popular path that is close to residential areas (and bus routes). Sections 1 and 2 have had some repair / construction. The summit plateau has generally low gradients.

**Overall assessment:** Minimal peat depths mean that the amount of damage caused by recreational pressure is not problematic on the summit area; steeper slopes are showing signs of damage but are reasonably well constrained to prevent landscape scale impacts.

Weather conditions at time of survey: Showers

**Work summary:** Minor repairs of existing path sections are recommended. Informal sections (3,4 and 5) are not in need of urgent work. The site is potentially accessible by excavator is necessary.



Two Rock and Three Rock Mountains

Start: O 17564 23217 (± 9m)

End: O 17413 22858 (± 9m)

**Section description:** Constructed section of mixed pitching and aggregate that runs adjacent to forestry plantation. Low gradient for pitching and some users are avoiding the pitching.

### Current Condtion

Length (m)	Max gradient (%)	Min gradient (%)	Crossfall (%)
382	20	15	0

Substrate	Peat Depth (cm)
mineral_soil	0

	Minimum	Maximum	Typical
Trampled width (m)	1	1.2	4
Bare width (m)	1	1.2	2
Eroded depth (m)	0	0	0.1

Availability of Materials: None

Site Assessment:Access at bottom

### Work Required

Work type	Estimated input	Work Summary
minor_repair	4 days labour	Adjust start. Install culvert by barrier to stop erosion of surface. Extend barrier to secure the path



5

1619781748055.jpg - O 17552 23186 (± 9m)

1619781804349.jpg - O 17537 23142 (± 9m)

2



3

1619782286935.jpg - O 17475 23000 (± 7m)

1619782495862.jpg - O 17434 22921 (± 9m)

4

## Two Rock and Three Rock Mountains

Start: O 17413 22858 ( $\pm 10\text{m}$ )

End: O 17222 22401 ( $\pm 9\text{m}$ )

Section description: End of plantation

### Current Condition

Length (m)	Max gradient (%)	Min gradient (%)	Crossfall (%)
486	20	10	0

Substrate	Peat Depth (cm)
peat	10

	Minimum	Maximum	Typical
Trampled width (m)	1.5	2	4
Bare width (m)	1.5	1.8	2.5
Eroded depth (m)	0	0.1	0.2

**Availability of Materials:** Aggregate in side ditch  
- 80 tonnes required

**Site Assessment:** Open hill for machine access

### Work Required

Work type	Estimated input	Work Summary
part_repair	30 days labour	Resurface 250m and adjust 10 anchors



1619783013619.jpg - O 17413 22858 ( $\pm 9\text{m}$ )

1619783202019.jpg - O 17387 22764 ( $\pm 9\text{m}$ )



1619783274290.jpg - O 17382 22744 ( $\pm 9\text{m}$ )

1619783529579.jpg - O 17332 22639 ( $\pm 9\text{m}$ )

**Two Rock and Three Rock Mountains** Start: O 17221 22401 (± 4m) End: O 17465 22073 (± 9m)

**Section description:** Section starts at summit of Two Rock Mountain and runs across the plateau. Low gradient means that this section is relatively stable.

Current Condtion

Length (m)	Max gradient (%)	Min gradient (%)	Crossfall (%)
489	10	5	0

Substrate	Peat Depth (cm)
peat	30

	Minimum	Maximum	Typical
Trampled width (m)	3	4	16
Bare width (m)	2	2.5	3.5
Eroded depth (m)	0.2	0.2	0.5

**Availability of Materials:** Good - currently none required

**Site Assessment:**Open hill but no machine work should be undertaken

Work Required

Work type	Estimated input	Work Summary
Light_touch	5 days labour	50m line definition and landscaping to reduce the width of the path



5 1619784432706.jpg - O 17230 22383 (± 4m)

1619784549442.jpg - O 17272 22320 (± 4m) 2



3 1619784671220.jpg - O 17320 22248 (± 4m)

1619785466423.jpg - O 17479 22063 (± 9m) 4

**Two Rock and Three Rock Mountains** Start: O 17536 22047 (± 4m)

End: O 17426 22558 (± 4m)

**Section description:** Section starts at path junction and runs north along a cross slope.

Current Condtion

Length (m)	Max gradient (%)	Min gradient (%)	Crossfall (%)
520	5	0	5

Substrate	Peat Depth (cm)
peat	20

	Minimum	Maximum	Typical
Trampled width (m)	1.5	2.5	4
Bare width (m)	1.2	2.5	3
Eroded depth (m)	0.1	0.2	0.3

**Availability of Materials:** Good

**Site Assessment:**Easy access but no need for machine

Work Required

Work type	Estimated input	Work Summary
Light_touch	30 days labour	Drainage (4 cross drains and 200m ditch) and line definition



1619785613678.jpg - O 17536 22047 (± 9m)

1619785702115.jpg - O 17518 22137 (± 8m)



1619785800508.jpg - O 17508 22182 (± 4m)

1619785973467.jpg - O 17474 22326 (± 3m)

**Two Rock and Three Rock Mountains** Start: O 17426 22558 (± 9m) End: O 17454 22802 (± 9m)

**Section description:** Section starts at corner and where there is an increase in gradient. Informal path with exposed boulders.

Current Condtion

Length (m)	Max gradient (%)	Min gradient (%)	Crossfall (%)
289	20	5	10

Substrate	Peat Depth (cm)
peat	20

	Minimum	Maximum	Typical
Trampled width (m)	1.5	3	4.5
Bare width (m)	1	2.5	3.5
Eroded depth (m)	0.1	0.2	0.4

**Availability of Materials:** Good - 5 tonnes of block stone required

**Site Assessment:**No machine access required

Work Required

Work type	Estimated input	Work Summary
Light_touch	20 days labour	Drainage (10 water bars) and line definition / deroughening



1619786477469.jpg - O 17425 22558 (± 7m)

1619787370152.jpg - O 17460 22620 (± 5m)



1619787500720.jpg - O 17505 22727 (± 4m)

1619787602355.jpg - O 17456 22798 (± 4m)

## Two Rock and Three Rock Mountains

Start: O 17454 22802 ( $\pm 9\text{m}$ )

End: O 17414 22862 ( $\pm 9\text{m}$ )

Section description: Junction and trees

### Current Condition

Length (m)	Max gradient (%)	Min gradient (%)	Crossfall (%)
64	25	20	0

Substrate	Peat Depth (cm)
peat	10

	Minimum	Maximum	Typical
Trampled width (m)	0.3	0.5	2.5
Bare width (m)	0.3	0.5	1.5
Eroded depth (m)	0.2	0.2	0.5

**Availability of Materials:** Good

**Site Assessment:**No excavator

### Work Required

Work type	Estimated input	Work Summary
early_intervention	10 days labour	Drainage: 5 water bars and side drain 1 cross drain



1619787875487.jpg - O 17454 22804 ( $\pm 8\text{m}$ )



1619787930246.jpg - O 17438 22829 ( $\pm 7\text{m}$ )



1619787973068.jpg - O 17427 22845 ( $\pm 9\text{m}$ )



1619788009961.jpg - O 17413 22862 ( $\pm 5\text{m}$ )