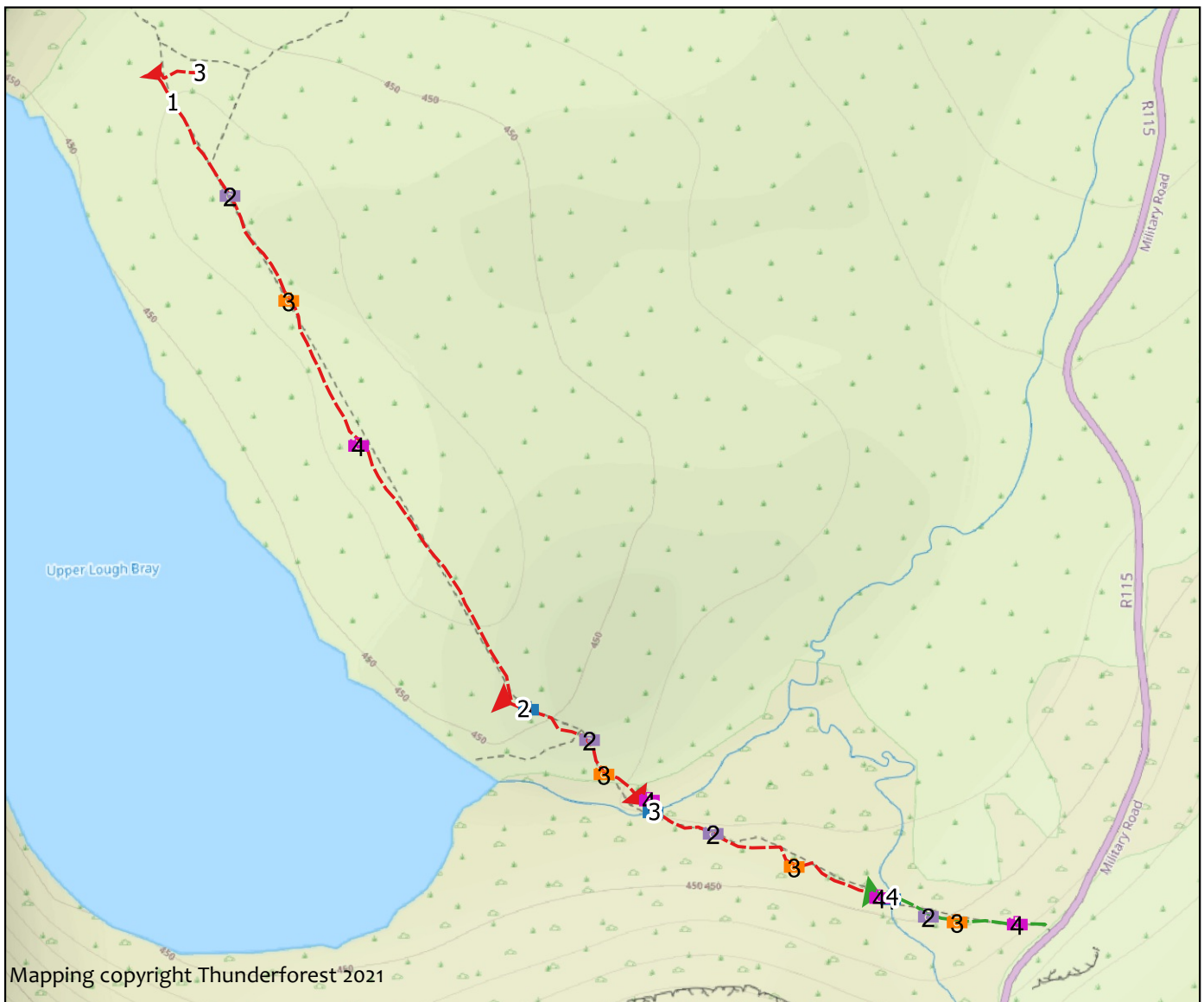


# Lough bray moraine

Survey date: Apr 27, 2021

Length: 880m

Sections: 4

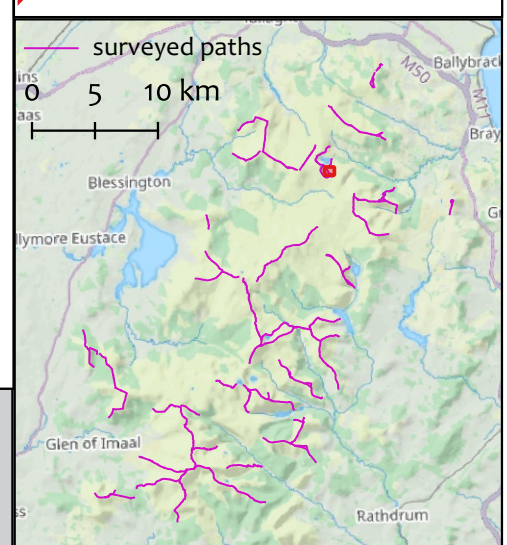
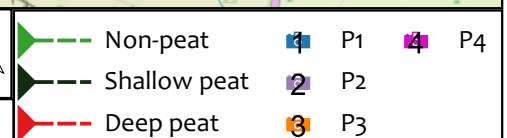


**Overall description:** Path from old quarry / car park to Upper Lough Bray and along moraine

**Overall assessment:** Don't upgrade - Potential to cause recreation hot spot if significantly upgraded and very difficult to manage

Weather conditions at time of survey: Showers

**Work summary:** No work recommended



# Lough bray moraine (Section 1)

Start: O 13606 15798 (± 4m)

End: O 13918 15302 (± 4m)

**Section description:** Section starts at junction between the two loughs and runs along the moraine. It is a very wide trample zone on deep peat

## Current Condtion

Length (m)	Max gradient (%)	Min gradient (%)	Crossfall (%)
475	15	0	0

Substrate	Peat Depth (cm)
peat	90

	Minimum	Maximum	Typical
Trampled width (m)	2	4	7
Bare width (m)	1	1.8	3
Eroded depth (m)	0.1	0.1	0.4

**Availability of Materials:** There may be aggregate within moraine but unlikely to be sufficient

**Site Assessment:**Deep peat means machine access would be tricky

## Work Required

Work type	Estimated input	Work Summary
none		The deep peat means that it would be necessary to float a path but the broad top of the moraine means that it will be difficult to keep visitors on the path - so a narrow path would be ineffective. Work is not recommended.



1619537535168.jpg - O 13622 15768 (± 4m)



1619537799851.jpg - O 13732 15637 (± 6m)



1619537915740.jpg - O 13770 15568 (± 4m)



1619538038190.jpg - O 13816 15473 (± 4m)



# Lough bray moraine (Section 2)

Start: O 13918 15302 (± 4m)

End: O 14003 15236 (± 5m)

Section description: Section starts at the very large boulders at end of moraine and runs down to the stream crossing

## Current Condtion

Length (m)	Max gradient (%)	Min gradient (%)	Crossfall (%)
116	25	20	0

Substrate	Peat Depth (cm)
peat	70

	Minimum	Maximum	Typical
Trampled width (m)	3	5	8
Bare width (m)	2	4	5
Eroded depth (m)	0	0.2	0.5

Availability of Materials: Stone and aggregate

Site Assessment:Open slope

## Work Required

Work type	Estimated input	Work Summary
none		Given the sensitivity of the moraine (deep peat) no work is recommended. In principle a path could be built with a mix of aggregate (70m) and boulder pitching (50m). This would need to be floated on deep peat, which may lead to long term management problems



1619538676558.jpg - O 13928 15299 (± 5m)



1619538772880.jpg - O 13968 15280 (± 5m)



1619538818554.jpg - O 13977 15257 (± 4m)



1619538878785.jpg - O 14007 15240 (± 4m)

## Lough bray moraine (Section 3)

Start: O 14004 15236 (± 4m)

End: O 14156 15177 (± 4m)

**Section description:** This section is between two stream crossings

### Current Condtion

Length (m)	Max gradient (%)	Min gradient (%)	Crossfall (%)
176	15	5	0

Substrate	Peat Depth (cm)
peat	80

	Minimum	Maximum	Typical
Trampled width (m)	5	25	40
Bare width (m)	1	2.5	6
Eroded depth (m)	0	0.2	1

**Availability of Materials:** Good

**Site Assessment:** Deep peat

### Work Required

Work type	Estimated input	Work Summary
none	15 days labour	Minor drainage (side ditch and 4 cross drains) and landscaping would help to reduce the current impact but upgrade of the path is not recommended



1619539144392.jpg - O 14010 15232 (± 5m)

1619539210318.jpg - O 14049 15218 (± 4m)



1619539290860.jpg - O 14102 15196 (± 5m)

1619539388153.jpg - O 14158 15176 (± 4m)



# Lough bray moraine (Section 4)

Start: O 14159 15175 (± 4m)

End: O 14266 15157 (± 5m)

Section description: This section runs between a stream crossing and the road

## Current Condtion

Length (m)	Max gradient (%)	Min gradient (%)	Crossfall (%)
113	35	5	0

Substrate	Peat Depth (cm)
	0

	Minimum	Maximum	Typical
Trampled width (m)	0.6	1	3
Bare width (m)	0.3	0.5	1.5
Eroded depth (m)	0	0.1	0.3

Availability of Materials: Good

Site Assessment:Steep start by road

## Work Required

Work type	Estimated input	Work Summary
none	10 days labour	Minor works to drain and deroughen the surface could be beneficial but could provide encouragement for additional use. Not recommended



1619539591914.jpg - O 14166 15175 (± 5m)



1619539641223.jpg - O 14190 15164 (± 5m)



1619539680812.jpg - O 14209 15160 (± 4m)



1619539865315.jpg - O 14249 15158 (± 5m)