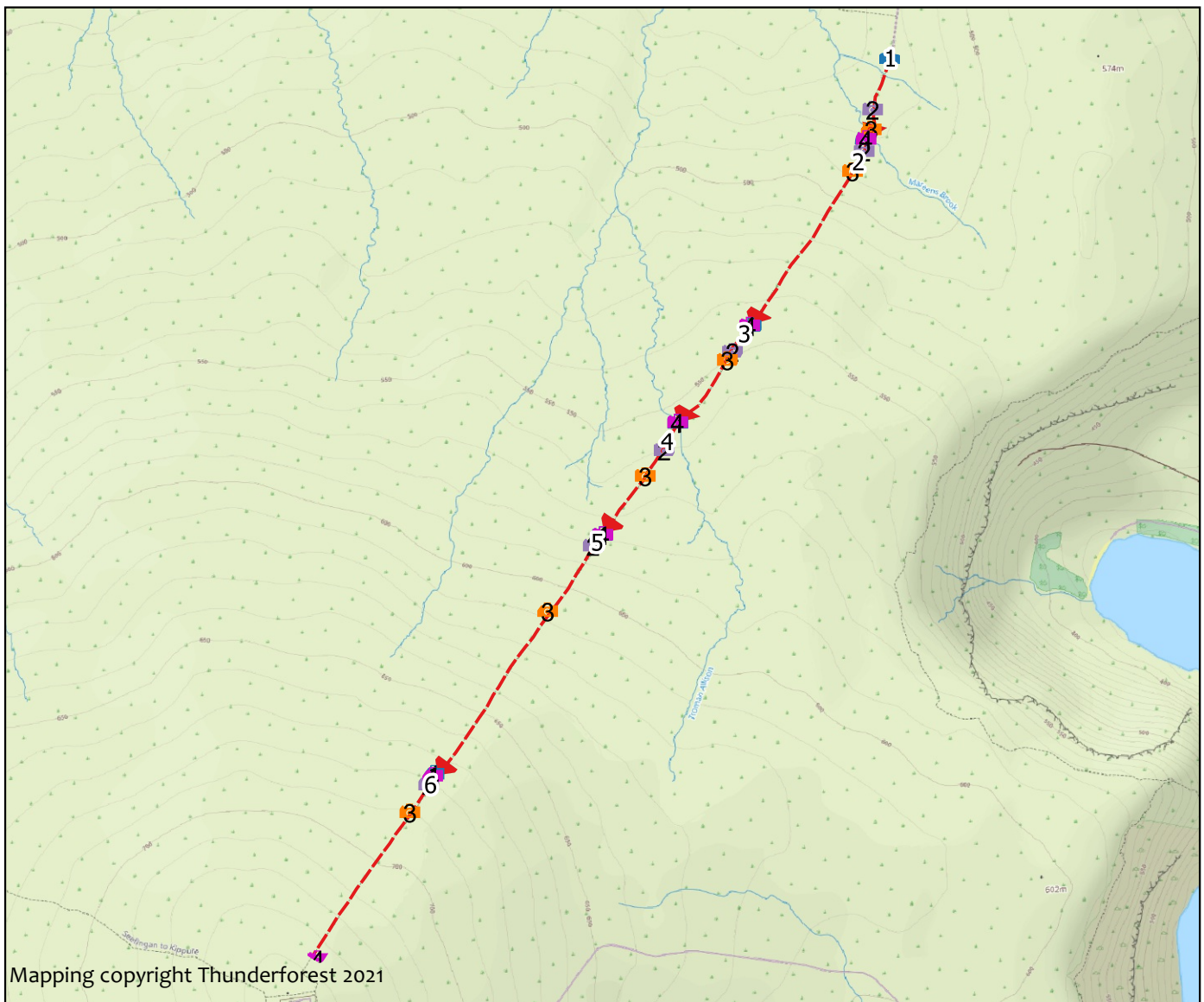


# Kippure to White Rock Road

Survey date: 2021-07-18

Length: 2297m

Sections: 6



0 200 400 m



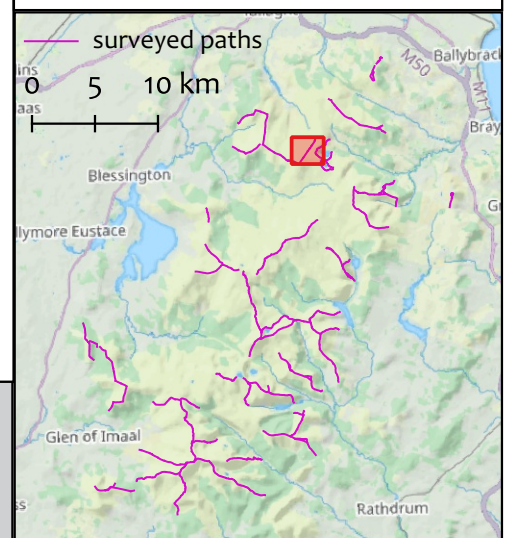
- |                |      |      |
|----------------|------|------|
| — Non-peat     | 1 P1 | 4 P4 |
| — Shallow peat | 2 P2 |      |
| — Deep peat    | 3 P3 |      |

**Overall description:** Walking route from peat road to the summit with communications mast

**Overall assessment:** Extensive areas of deep peat - makes intervention difficult to justify

Weather conditions at time of survey: Very dry, warm and sunny

**Work summary:** Work only viable near stream crossings where there is no peat.



**Kippure to White Rock Road (Section** Start: O 12863 17464 ( $\pm 4\text{m}$ ) End: O 12811 17290 ( $\pm 5\text{m}$ )  
**Section description:** Start of route after turfers access track

**Kippure to White Rock Road (Section** Start: O 12863 17464 ( $\pm 4\text{m}$ ) End: O 12811 17290 ( $\pm 5\text{m}$ )  
**Section description:** Start of route after turfers access track

### Current Condition

Length (m)	Max gradient (%)	Min gradient (%)	Crossfall (%)
189	3	0	0

Substrate	Peat Depth (cm)
peat	100

	Minimum	Maximum	Typical
Trampled width (m)	0.5	1	2
Bare width (m)	0.3	0.5	2
Eroded depth (m)	0.1	0.2	0.6

**Availability of Materials:** No stone available

**Site Assessment:** Good access by track before beginning of route

### Work Required

Work type	Estimated input	Work Summary
early_intervention	5 days labour	Deep peat means limited work is possible. Address two stream crossings where with bank erosion problems. Block several braids.



1626599877409.jpg - O 12862 17465 ( $\pm 5m$ )



1626600321013.jpg - O 12826 17356 ( $\pm 5\text{m}$ )



1626600500584.jpg - O 12823 17314 ( $\pm 5m$ )



1626600624603.jpg - O 12812 17293 ( $\pm 4m$ )



**Kippure to White Rock Road (Section** Start: O 12807 17293 (± 5m) End: O 12565 16898 (± 4m)

**Section description:** Change of gradient after last stream crossing. Middle section with steeper ground with several braids and deep erosion. Drainage problems with an area where mineral soil begins to be exposed.

Current Condtion

Length (m)	Max gradient (%)	Min gradient (%)	Crossfall (%)
469	19	3	0

Substrate	Peat Depth (cm)
peat	100

	Minimum	Maximum	Typical
Trampled width (m)	0.5	1	6
Bare width (m)	0	0.5	6
Eroded depth (m)	0	0.2	1

**Availability of Materials:** No stones available  
**Site Assessment:**Difficult access for machinery, previous stream crossings.

Work Required

Work type	Estimated input	Work Summary
none	10 days labour	Block landscaping required. Deep peat means light touch work would not be viable



1626600957362.jpg - O 12810 17294 (± 4m)



1626601158765.jpg - O 12808 17267 (± 5m)



1626601394021.jpg - O 12783 17225 (± 4m)



1626602790268.jpg - O 12564 16896 (± 4m)

Current Condtion

Length (m)	Max gradient (%)	Min gradient (%)	Crossfall (%)
263	6	0	0

Substrate	Peat Depth (cm)
peat	100

	Minimum	Maximum	Typical
Trampled width (m)	0.5	1	2
Bare width (m)	0.3	1	3
Eroded depth (m)	0	0.2	0.5

Availability of Materials:


No stones

Site Assessment:

Remote.


Work Required

Work type	Estimated input	Work Summary
none		Deep peat means full construction or no intervention




1

1626602935510.jpg - O 12567 16895 (± 4m)




2

1626603217630.jpg - O 12527 16840 (± 5m)



3

1626603269946.jpg - O 12516 16822 (± 5m)



4

1626603582999.jpg - O 12410 16690 (± 5m)

Walking

the Talk

since 2006

Current Condtion

Length (m)	Max gradient (%)	Min gradient (%)	Crossfall (%)
284	12	3	0

Substrate	Peat Depth (cm)
peat	100

	Minimum	Maximum	Typical
Trampled width (m)	0.5	1	3
Bare width (m)	0.3	0.6	2.5
Eroded depth (m)	0	0.1	0.6

Availability of Materials: No stones available

Site Assessment:Remote

Work Required

Work type	Estimated input	Work Summary
none		Deep eroding braids cannot be fixed with light touch techniques due to peat depth



1

1626603882543.jpg - O 12411 16688 (± 5m)



2

1626604182069.jpg - O 12382 16630 (± 4m)



3

1626604385510.jpg - O 12341 16575 (± 5m)





4

1626604618259.jpg - O 12251 16450 (± 5m)



Current Condtion

Length (m)	Max gradient (%)	Min gradient (%)	Crossfall (%)
628	16	6	0

Substrate	Peat Depth (cm)
peat	100

	Minimum	Maximum	Typical
Trampled width (m)	0.5	1.5	4
Bare width (m)	0.2	1	3
Eroded depth (m)	0.1	0.3	0.5

Availability of Materials: No stones

Site Assessment:

Materials for peatland restoration could be brought by vehicle to the summit

Work Required

Work type	Estimated input	Work Summary
none		Block landscaping in a few areas - this would concentrate use on to a single line which might make things worse



1

1626604822003.jpg - O 12250 16449 (± 5m)



2

1626605013126.jpg - O 12231 16427 (± 5m)



3

1626605482889.jpg - O 12133 16287 (± 5m)





4

1626606137759.jpg - O 11888 15937 (± 5m)

**Kippure to White Rock Road (Section**    Start: O 11893 15940 (± 5m)                      End: O 11642 15546 (± 5m)

**Section description:** Path line not defined, just through wide peat eroded area immediately before summit

Current Condtion

Length (m)	Max gradient (%)	Min gradient (%)	Crossfall (%)
464	12	0	0

Substrate	Peat Depth (cm)
peat	100

	Minimum	Maximum	Typical
Trampled width (m)	0	0	0
Bare width (m)	0	0	0
Eroded depth (m)	0	0	0

**Availability of Materials:** No stones

**Site Assessment:**Machinery access to summit by track

Work Required

Work type	Estimated input	Work Summary
none		Peatland restoration techniques



1626606442903.jpg - O 11891 15941 (± 5m)



1626606518239.jpg - O 11880 15918 (± 5m)



1626606653807.jpg - O 11840 15859 (± 4m)



1626607149375.jpg - O 11644 15546 (± 5m)