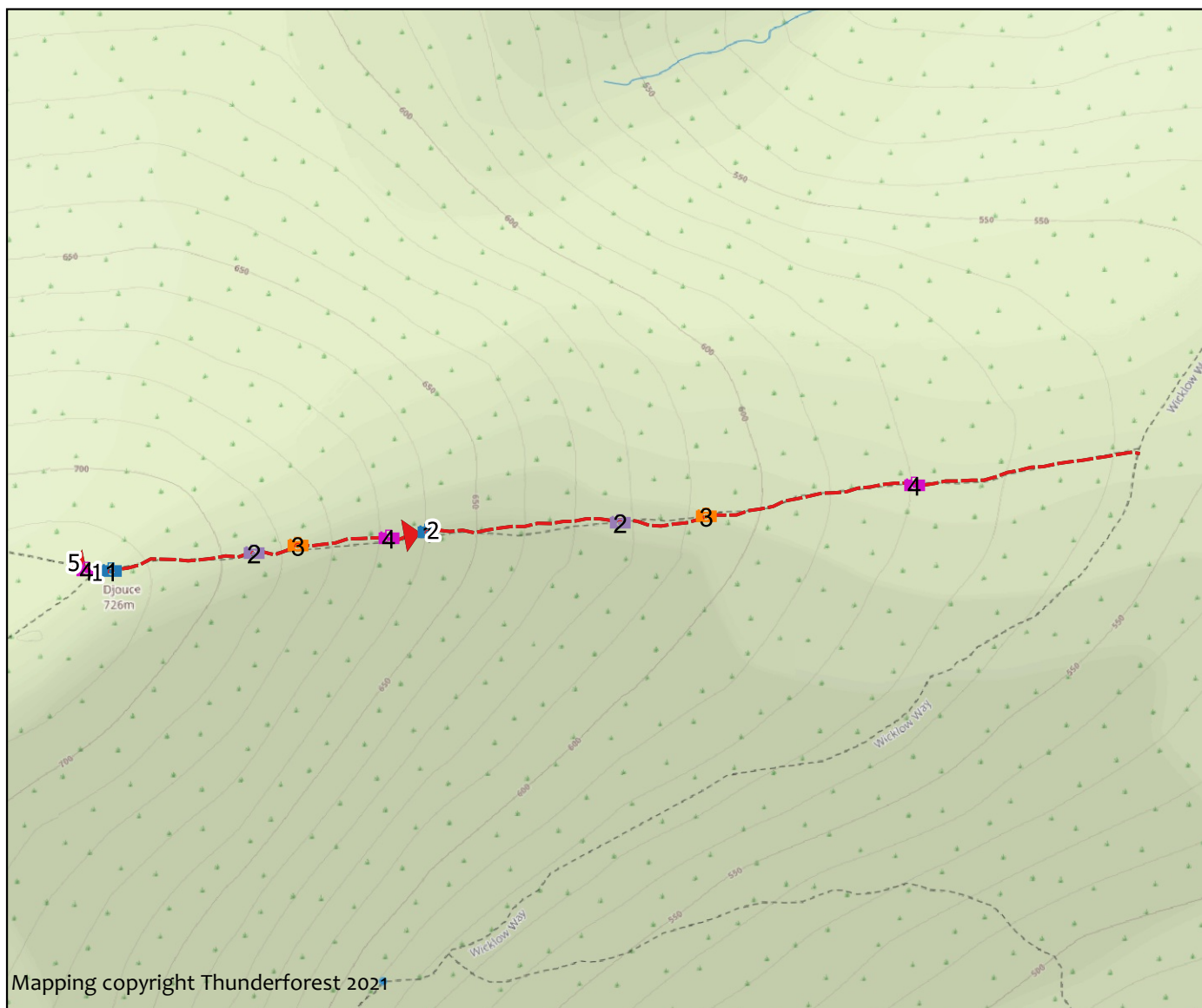


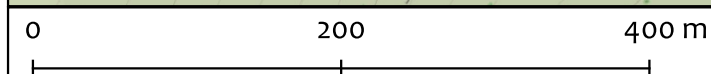
Survey date: Apr 23, 2021

Length: 803m

Sections: 2



Mapping copyright Thunderforest 2021



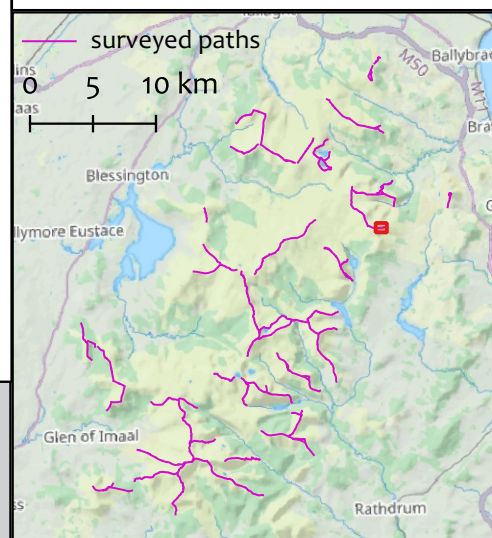
- | | | |
|----------------|------|------|
| — Non-peat | 1 P1 | 4 P4 |
| — Shallow peat | 2 P2 | |
| — Deep peat | 3 P3 | |

Overall description: Popular path to summit from Wicklow Way (alternative route to south not surveyed)

Overall assessment: Heavily used path with wide damage zone - consider option to repair alternative route to provide a circuit (to discourage access towards War Hill)

Weather conditions at time of survey: Sunny

Work summary: Full repair within the existing line of damage



Djouce (Section 1)
Section description: Summit

Start: O 17862 10341 (± 4m)

End: O 18113 10371 (± 4m)

Current Condtion

Length (m)	Max gradient (%)	Min gradient (%)	Crossfall (%)
258	32	22	0

Substrate	Peat Depth (cm)
peat	20

	Minimum	Maximum	Typical
Trampled width (m)	20	20	25
Bare width (m)	6	8	12
Eroded depth (m)	0.1	0.1	0.3

Availability of Materials: Marginal block stone

Site Assessment:Highly visible path easy access

Work Required

Work type	Estimated input	Work Summary
major_repair	130 days labour	Zig zag pitch and aggregate within damage zone: 220m aggregate 15 water bars and anchors 20m pitch consider landscaping with jute net



1619196461697.jpg - O 17880 10343 (± 5m)

1619196730645.jpg - O 17986 10356 (± 5m)



1619196843528.jpg - O 18019 10362 (± 4m)

1619196979271.jpg - O 18087 10367 (± 4m)

Djouce (Section 2)

Start: O 18113 10371 (± 4m)

End: O 18646 10429 (± 4m)

Section description: Sections starts by the lower enclosure

Current Condtion

Length (m)	Max gradient (%)	Min gradient (%)	Crossfall (%)
545	30	12	0

Substrate	Peat Depth (cm)
peat	20

	Minimum	Maximum	Typical
Trampled width (m)	6	8	12
Bare width (m)	2	3	6
Eroded depth (m)	0.2	0.3	0.5

Availability of Materials: Limited block stone

Site Assessment:Half is steep

Work Required

Work type	Estimated input	Work Summary
major_repair	250 days labour	Full repair within damaged zone: 500m aggregate with water bars and anchors; pitching on zig zags and extensive landscaping



1619197421790.jpg - O 18116 10372 (± 7m)

1619197593453.jpg - O 18260 10379 (± 5m)



1619197680938.jpg - O 18324 10384 (± 4m)

1619197875662.jpg - O 18480 10407 (± 4m)