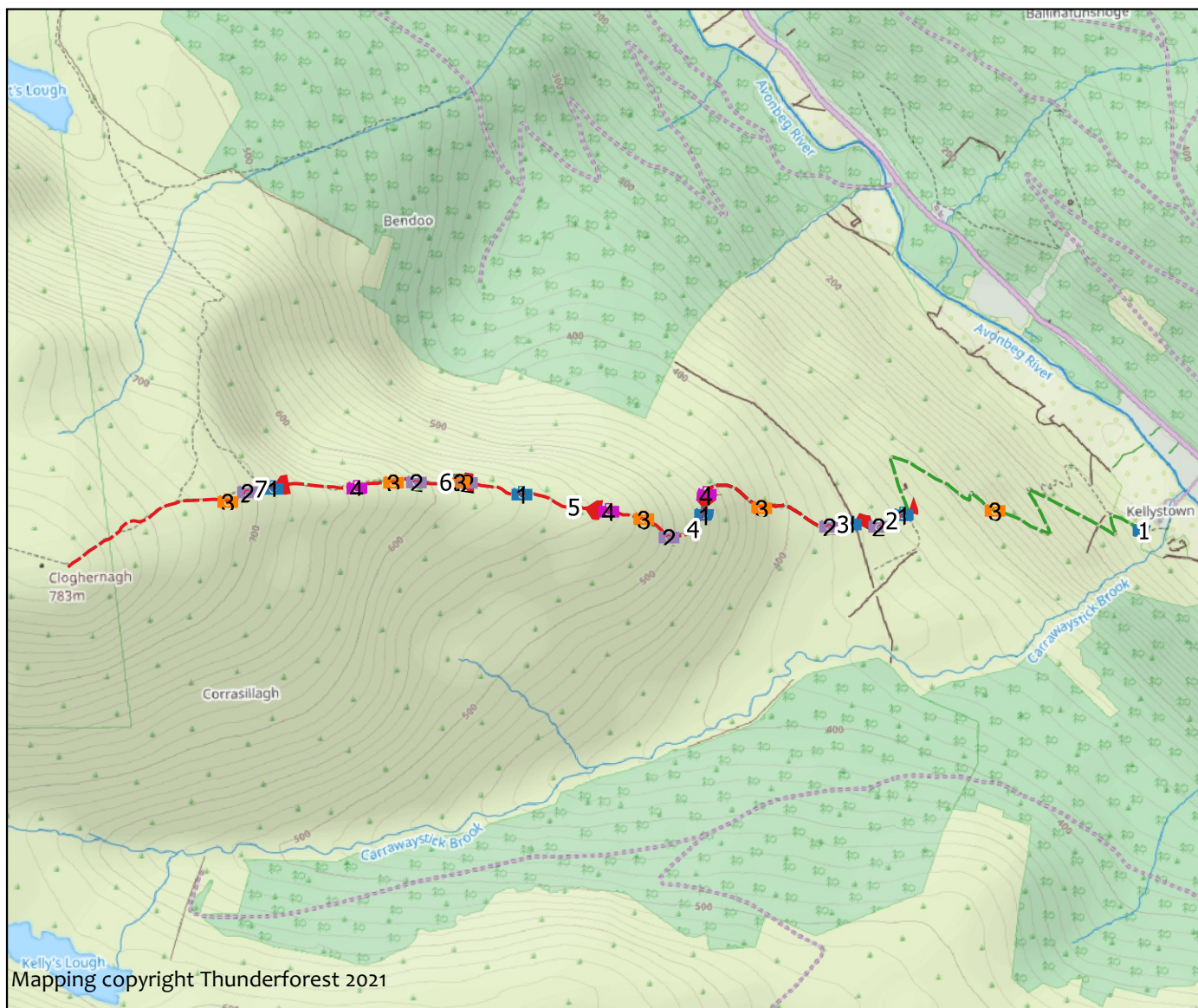


Survey date: Apr 22, 2021

Length: 3516m

Sections: 7



0 200 400 m



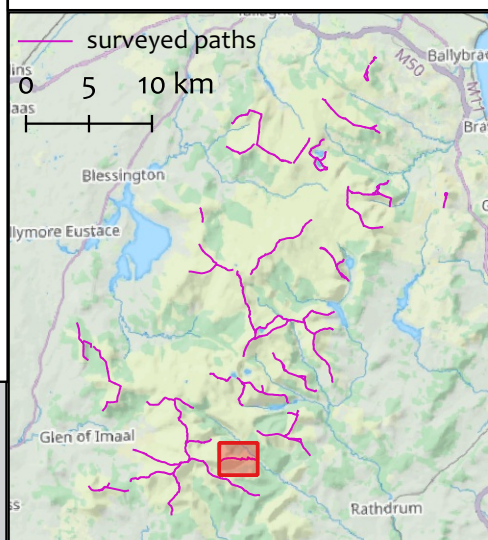
- | | | |
|----------------|------|------|
| — Non-peat | 1 P1 | 4 P4 |
| — Shallow peat | 2 P2 | |
| — Deep peat | 3 P3 | |

Overall description: Path leads from a farm yard up an old pony track and on to the open hill

Overall assessment: Could be a good demonstration site for management of paths through eroded peat

Weather conditions at time of survey: Sunny

Work summary: Mix of path techniques and small scale peat restoration



Claughenagh (Section 1)

Start: T 08601 91971 (± 9m)

End: T 08001 92018 (± 3m)

Section description: Path starts at farm yard - this section is an old pony track but not part of the survey

Current Condtion

Length (m)	Max gradient (%)	Min gradient (%)	Crossfall (%)
1141	25	0	0

Substrate	Peat Depth (cm)
	0

	Minimum	Maximum	Typical
Trampled width (m)	0	0	0
Bare width (m)	0	0	0
Eroded depth (m)	0	0	0

Availability of Materials:

Site Assessment:

Work Required

Work type	Estimated input	Work Summary
minor_repair		one cross drain needs to be repaired



5

1619083348931.jpg - T 08600 91974 (± 9m)

- (± m)

2



3

1619084397617.jpg - T 08222 92025 (± 9m)

- (± m)

4

Claughenagh (Section 2)

Start: T 08001 92019 (\pm 8m)

End: T 07864 91989 (\pm 3m)

Section description: Section starts at the end of the pony track

Current Condition

Length (m)	Max gradient (%)	Min gradient (%)	Crossfall (%)
148	35	10	0

Substrate	Peat Depth (cm)
peat	55

	Minimum	Maximum	Typical
Trampled width (m)	4	5	10
Bare width (m)	0	0	0.5
Eroded depth (m)	0	0	0.2

Availability of Materials: Good

Site Assessment: quad bike access, but not required for this work

Work Required

Work type	Estimated input	Work Summary
early_intervention	15 days labour	Spot repairs amounting to 5m of stone pitching and 1 cross drain at start; 15m mixed pitching / aggregate (30/70). Full upgrade of this section is not recommended at present as it is likely to encourage increased use. Some areas of deep peat (>50cm) will be difficult to manage if use increases significantly - floated path would be required.



1619085353163.jpg - T 07988 92014 (\pm 3m)

1619085596521.jpg - T 07925 91985 (\pm 3m)



3 - (\pm m)

- (\pm m)

4

Claughenagh (Section 3)

Start: T 07866 91991 (± 4m)

End: T 07480 92025 (± 9m)

Section description: This section begins at the stile. Desire line with sufficient trampling to leave bare ground in places. The line is braided and poorly drained

Current Condtion

Length (m)	Max gradient (%)	Min gradient (%)	Crossfall (%)
463	40	20	0

Substrate	Peat Depth (cm)
peat	20

	Minimum	Maximum	Typical
Trampled width (m)	1	1.5	4
Bare width (m)	0	0.5	2
Eroded depth (m)	0	0.1	0.2

Availability of Materials: Large area of block stone part way up this section

Site Assessment:Relatively easy access, stone could be moved with a power barrow

Work Required

Work type	Estimated input	Work Summary
early_intervention	10 days labour	Drainage could be installed to help reduce the impact of trampling - 10 water bars. Another option would be to fully construct a path (not currently recommended) - this would be a mix of aggregate and stone pitching



1619086485554.jpg - T 07855 91990 (± 3m)

1619086576670.jpg - T 07800 91984 (± 3m)



1619087038527.jpg - T 07627 92032 (± 3m)

1619087676028.jpg - T 07486 92066 (± 3m)

Claughenagh (Section 4)

Start: T 07480 92025 ($\pm 4m$)

End: T 07177 92030 ($\pm 9m$)

Section description: Section starts at an obvious grassy spot on granite outcrop. Vegetation has been trampled to expose peat and in places the peat has eroded to bedrock

Current Condition

Length (m)	Max gradient (%)	Min gradient (%)	Crossfall (%)
364	40	20	0

Substrate	Peat Depth (cm)
peat	40

	Minimum	Maximum	Typical
Trampled width (m)	1.5	2	4.5
Bare width (m)	0.5	1.5	3
Eroded depth (m)	0	0.3	0.4

Availability of Materials: Block stone available

Site Assessment: Good line

Work Required

Work type	Estimated input	Work Summary
Light_touch	40 days labour	Where the bedrock is exposed the path would benefit from line definition work (250m) and peat hag restoration (reducing the active erosion of the peat)



5

1619088071577.jpg - T 07481 92015 ($\pm 3m$)

1619088351655.jpg - T 07391 91957 ($\pm 3m$)

2

Walking
Talk
the since 2006



3

1619088511880.jpg - T 07326 92004 ($\pm 9m$)

1619088687649.jpg - T 07237 92023 ($\pm 3m$)

4

Current Condtion

Length (m)	Max gradient (%)	Min gradient (%)	Crossfall (%)
340	10	5	5

Substrate	Peat Depth (cm)
peat	50

	Minimum	Maximum	Typical
Trampled width (m)	1.5	2	3.5
Bare width (m)	0.8	1.5	2.5
Eroded depth (m)	0.3	0.3	0.6

Availability of Materials: No aggregate but down to bed rock

Site Assessment:Good option for trial work

Work Required

Work type	Estimated input	Work Summary
Light_touch	40 days labour	Hag restoration and blocking braids 200m; 300m deroughen; 5 water bars



1619091023442.jpg - T 07015 92067 (± 3m)

1619091691305.jpg - T 06876 92097 (± 9m)



1619091754093.jpg - T 06857 92098 (± 3m)

- (± m)

Claughenagh (Section 6)

Start: T 06850 92097 (\pm 9m)

End: T 06381 92082 (\pm 9m)

Section description: Low outcrop next to path

Current Condition

Length (m)	Max gradient (%)	Min gradient (%)	Crossfall (%)
477	15	5	0

Substrate	Peat Depth (cm)
peat	60

	Minimum	Maximum	Typical
Trampled width (m)	2	2.5	6
Bare width (m)	0.8	1.5	2.5
Eroded depth (m)	0	0.5	0.6

Availability of Materials: Good

Site Assessment: Ideal trial site for working with sites where peat has eroded to bedrock

Work Required

Work type	Estimated input	Work Summary
Light_touch	25 days labour	300m line definition; Peat restoration would be beneficial - reprofile hags



1619092215589.jpg - T 06850 92098 (\pm 3m)

1619092933625.jpg - T 06746 92098 (\pm 9m)



1619093269550.jpg - T 06688 92097 (\pm 9m)

1619093805352.jpg - T 06594 92082 (\pm 3m)

Claughenagh (Section 7)

Start: T 06381 92082 ($\pm 4m$)

End: T 05860 91881 ($\pm 3m$)

Section description: Section starts where the path moves away from cliff edge and runs to summit of Cloghernaugh

Current Condition

Length (m)	Max gradient (%)	Min gradient (%)	Crossfall (%)
583	25	15	0

Substrate	Peat Depth (cm)
peat	60

	Minimum	Maximum	Typical
Trampled width (m)	2	2.5	25
Bare width (m)	0	1.5	25
Eroded depth (m)	0	0.3	1

Availability of Materials: Limited - probably requires import for pitching

Site Assessment: Variable peat depth

Work Required

Work type	Estimated input	Work Summary
Light_touch	60 days labour	Pitch 30m; 50m line definition and possible jute net at bare peat; 15m deep cut peat to link sections at bedrock level - needs vegetation work to prevent peat erosion.



1619096616180.jpg - T 06381 92081 ($\pm 3m$)

1619096965645.jpg - T 06315 92072 ($\pm 3m$)

Walking
the Talk since 2006



1619097356488.jpg - T 06265 92048 ($\pm 3m$)

- ($\pm m$)